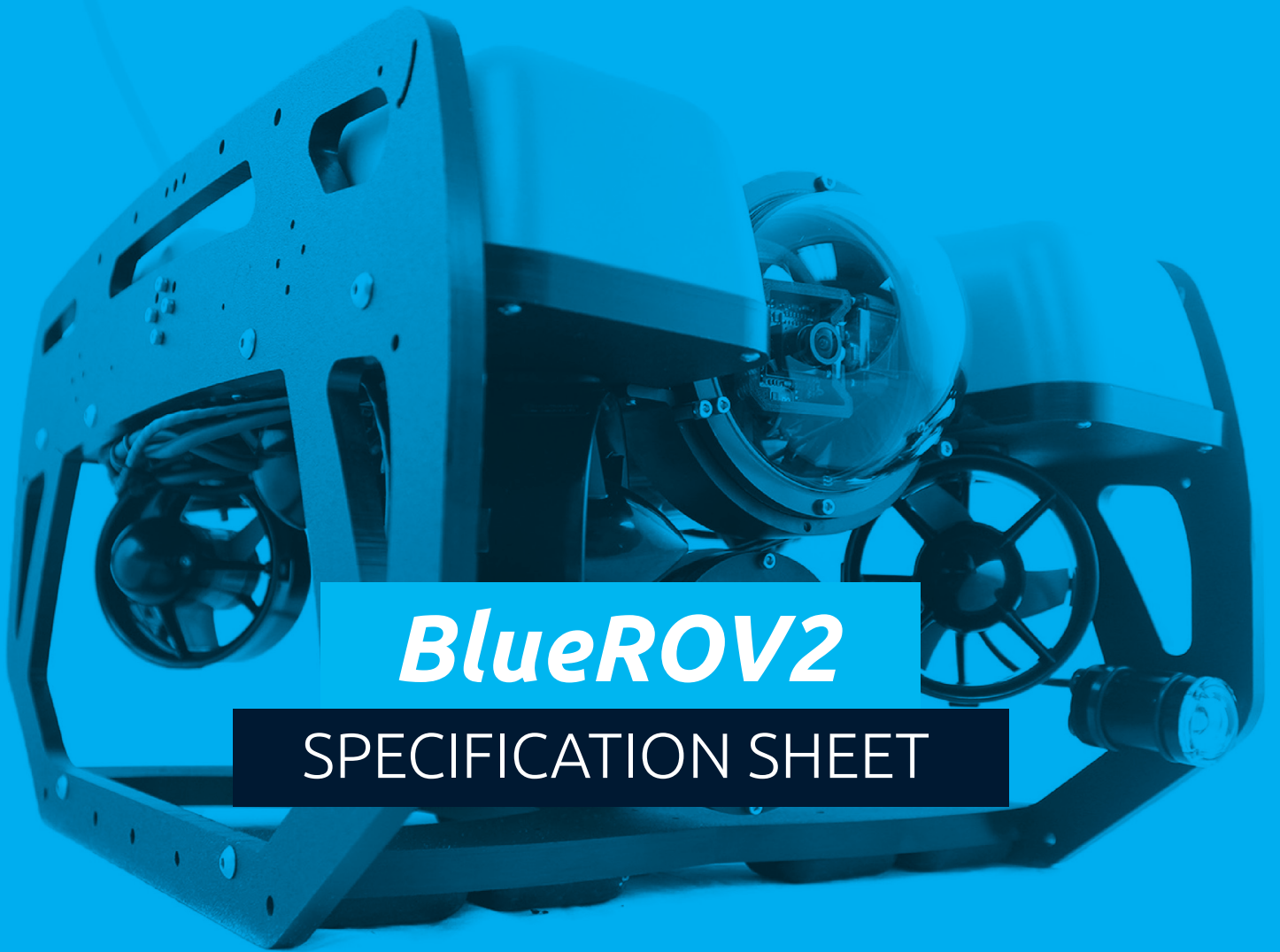




interdive



# *BlueROV2*

## SPECIFICATION SHEET

Tel: +44(0)1803 311222  
email: [info@interdive.co.uk](mailto:info@interdive.co.uk)  
website: [www.interdive.co.uk](http://www.interdive.co.uk)

# BlueROV2

## TETHER

Diameter	7.6 mm	0.30 in
Length	25-300 m	80-980 ft
Working Strength	45 kgf	100 lbf
Breaking Strength	160 kgf	350 lbf
Strength Member	Kevlar with waterblock	
Buoyancy in Freshwater	Neutral	
Buoyancy in Saltwater	Slightly positive	
Conductors	4 twisted pairs, 26 AWG	

## LIGHTS

Brightness	2 or 4 x 1500 lumens each with dimming control	
Light Beam Angle	135 degrees, with adjustable tilt	

## CAMERA

Camera	1080p digital	
Camera Field of View	110 degrees horizontally	
Tilt Range	+/- 90 degree camera tilt (180 total range)	
Tilt Servo	Hitec HS-5055MG	

## BATTERY (CAN BE CHANGED IN ABOUT 30 SECONDS)

Battery Life (Normal Use)	2-3 hours w/ 18Ah battery	
Battery Life (Normal Use)	2-3 hours w/ 18Ah battery	

## SENSORS

3-DOF Gyroscope	
3-DOF Accelerometer	
3-DOF Magnetometer	
Internal barometer	
Blue Robotics Bar 30 Pressure/Depth & Temperature Sensor (external)	
Current and Voltage Sensing	
Leak Detection	

## PRODUCT FEATURES

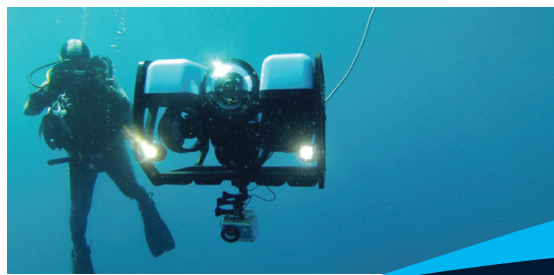
- Live Low-Latency 1080p HD Video
- Highly Maneuverable Vectored Thruster Configuration
- Stable and Optimized for Inspection and Research-Class Missions
- Easy to Use, Cross-Platform User Interface
- Highly Expandable with Three Free Cable Penetrators
- T200 Thrusters and Basic ESCs
- Standard 100m Depth Rating and up to 300m Tether Available
- Battery Powered with Quick-Swappable Batteries for Long Missions
- Open-Source ArduSub Control Software and Open-Source Hardware

## PHYSICAL

Length	457 mm	18 in
Width	338 mm	13.3 in
Height	254 mm	10 in
Weight in Air (with Ballast)	10-11 kg	22-24 lb
Weight in Air (without Ballast)	9-10 kg	20-22 lb
Net Buoyancy (with Ballast)	0.2 kg	0.5 lb
Net Buoyancy (without Ballast)	1.4 kg	3 lb
Watertight Enclosure Inner Diameter	102 mm	4 in
Watertight Enclosure Inner Length	298 mm	11.75 in
Cable Penetrator Holes	14 x 10 mm	14 x 0.4 in
Construction	HDPE frame, aluminum flanges/end cap, & acrylic tubes	
Main Tube (Electronics Enclosure)	Blue Robotics 4" Series w/ aluminum end caps	
Battery Tube	Blue Robotics 3" Series w/ aluminum end caps	
Buoyancy Foam	R-3318 urethane foam rated to 210 m	
Ballast Weight	6 x 200 g coated lead weights	
Battery Connector	XT90	

## PERFORMANCE

Maximum Rated Depth	100 m	330 ft
Maximum Tested Depth (so far)	130 m	425 ft
Maximum Forward Speed	1 m/s	2 knots
Thrusters	Blue Robotics T200	
ESC	Blue Robotics Basic 30A ESC	
Thruster Configuration	6 thrusters	
	- 4 Vectored	
	- 2 Vertical	
Forward Bollard Thrust	14 kgf	30 lbf
Vertical Bollard Thrust	9 kgf	20 lbf
Lateral Bollard Thrust	14 kgf	30 lbf



Tel: +44(0)1803 311222  
 email: [info@interdive.co.uk](mailto:info@interdive.co.uk)  
 website: [www.interdive.co.uk](http://www.interdive.co.uk)